



EBARA

	Page
- SPECIFICATIONS	200
SELECTION CHART	201
PERFORMANCE CHART BEST ONE	202
PERFORMANCE CHART BEST ONE VOX	203
- CONSTRUCTIONS	300
SECTIONAL VIEW	300
MECHANICAL SEAL	301
DIAGRAM AND ELECTRIC CONNECTIONS	302
DIAGRAM AND ELECTRIC CONNECTIONS	303
- DIMENSIONS	400
PACKING AND WEIGHT	401
- TECHNICAL DATA	500

SPECIFICATIONS

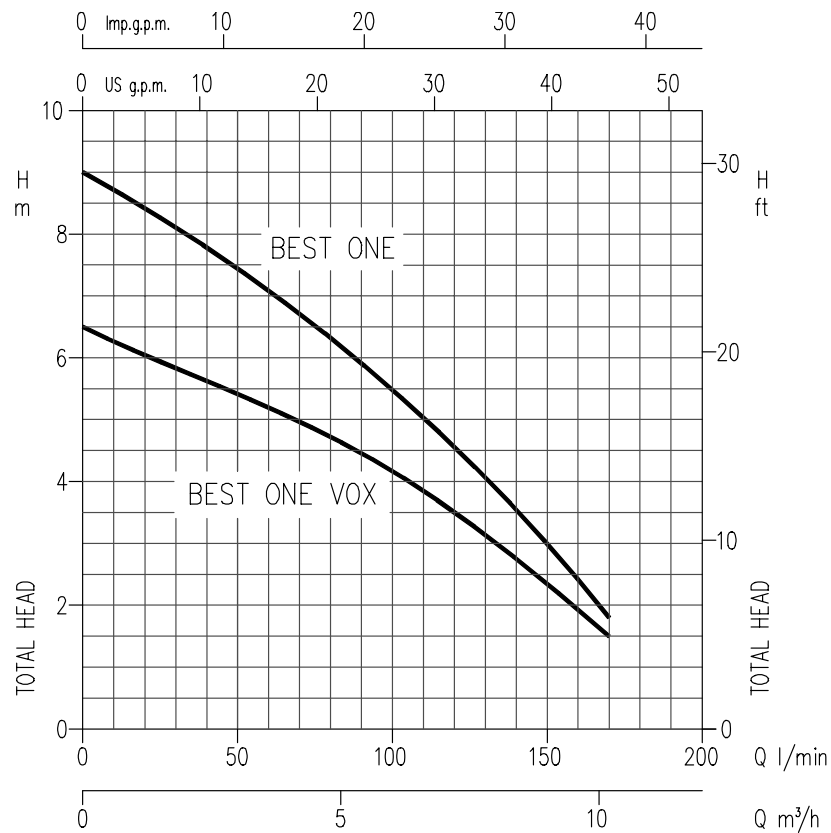
50 Hz

PUMP		
Liquid Handled	Type of liquid	Clean water
	Max temperature [°C]	50
	Max solids size [mm]	10 20 (for Vortex version)
Maximum immersion [m]		5
Construction	Impeller	Open centrifugal/vortex type
	Shaft seal type	Oil lubricated double lip seal
	Bearing	Sealed ball bearing
Pipe Connection	Suction-Flange	Strainer
	Discharge-Flange [inch]	G1 1/4 UNI ISO 228
Material	Pump casing	AISI 304
	Impeller	AISI 304
	Motor flange	AISI 304
	Shaft seal	NBR - Two lip seals
	Seal cover	AISI 304
	Shaft	AISI 303 + AISI 303 ceramic coated shaft sleeve
Lubricating liquid		White mineral oil: Esso Marcol 172 (20 cc)
Applicable standard of test		ISO 9906 – Annex A

MOTOR		
Type	Submersible dry type Single Phase	
No. of Poles	2	
Rotation speed [min ⁻¹]	≈2800	
Insulation Class	F	
Protection degree	IP 68	
Power rating	[kW]	0.25
	[HP]	0.33
Frequency [Hz]	50	
Voltage [V]	230 ±10%	
Capacitor	Built in	
Over load protection	Built in	
Float Switch	Optional	
Float Switch Cable	material	H07RN-F
	size	3G1
Casing material	AISI 304	
Base material/motor support	AISI 304	
Power cable	length [m]	5
	material	H05RN-F
	size	3G0.75
Dimensions of cable entry		Cable Gland

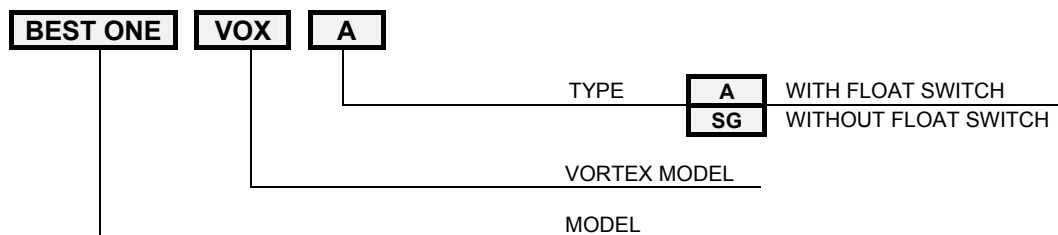
SELECTION CHART

50Hz



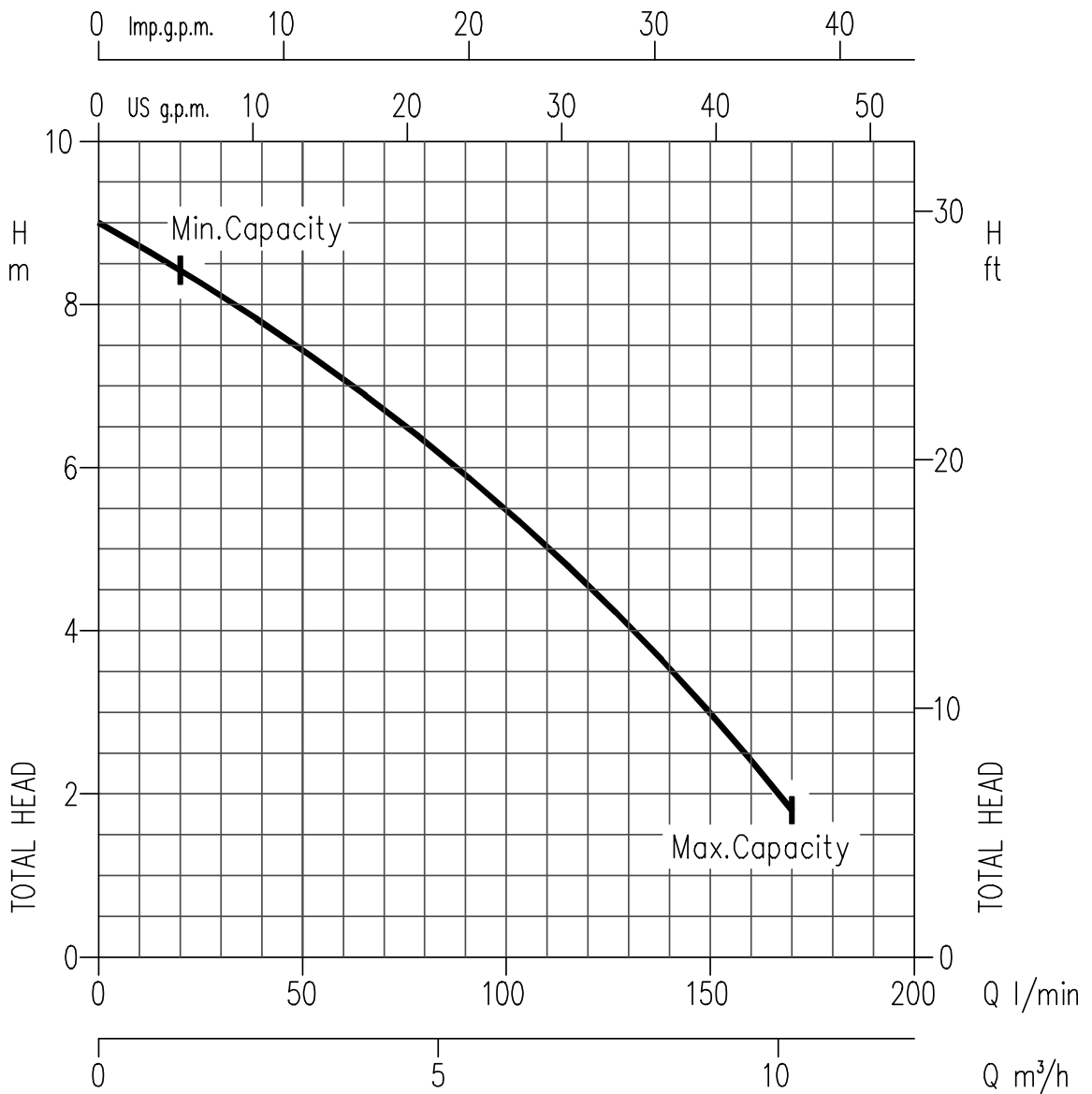
Pump type	kW	HP	Q=Capacity					
			l/min 20	40	80	120	160	170
			m³/h 1.2	2.4	4.8	7.2	9.6	10.2
H=Total manometric head in meters								
BEST ONE	0.25	0.33	8.3	7.8	6.3	4.5	2.4	1.8
BEST ONE VOX	0.25	0.33	6	5.6	4.8	3.5	2	1.5

TYPE KEY:



PUMP CHARACTERISTIC PERFORMANCE

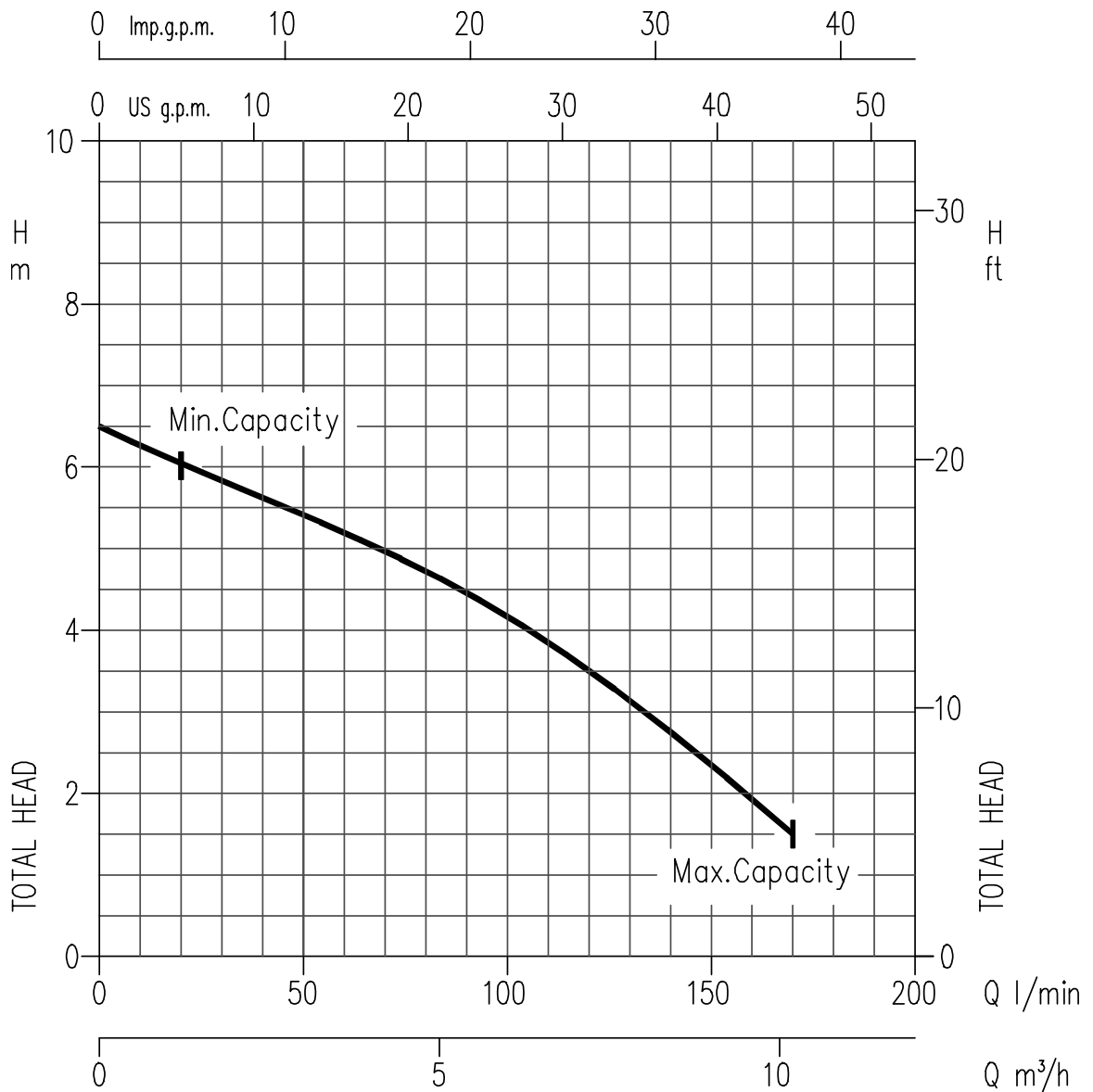
BEST ONE (0.25 kW) SYNCHRONOUS SPEED : 3000 min⁻¹



Temperature of water: 20 °C
 Impeller diameter = 85 mm
 Applicable standard of test ISO 9906 – Annex A

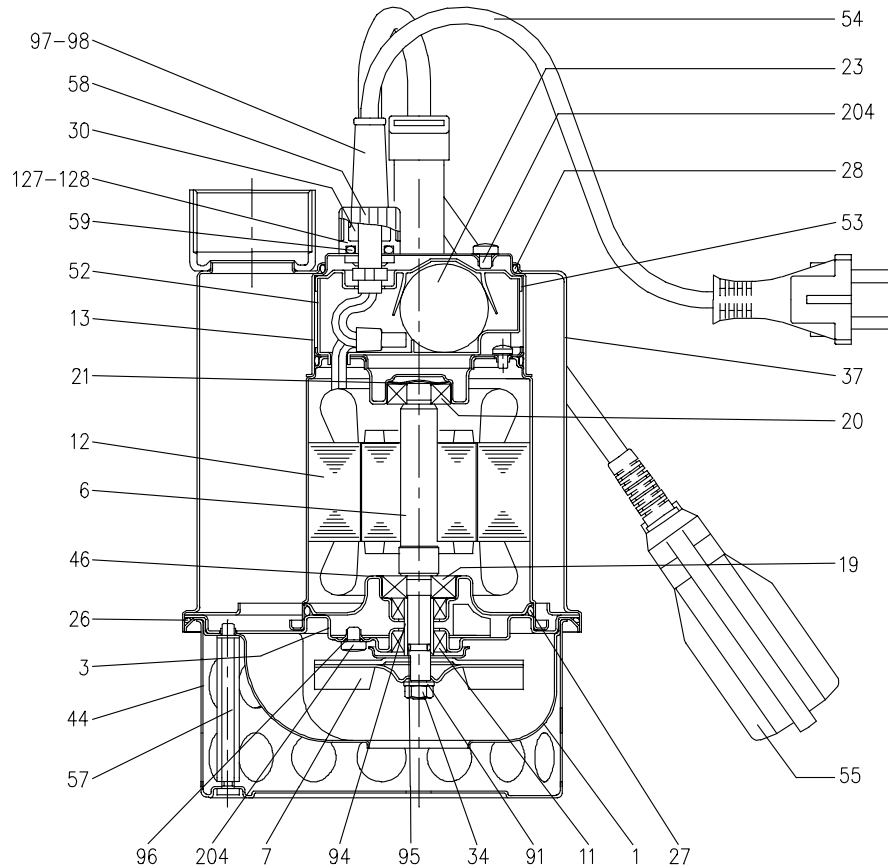
PUMP CHARACTERISTIC PERFORMANCE

BEST ONE VOX (0.25 kW) SYNCHRONOUS SPEED : 3000 min⁻¹



Temperature of water: 20 °C
 Impeller diameter = 85 mm
 Applicable standard of test ISO 9906 – Annex A

SECTIONAL VIEW

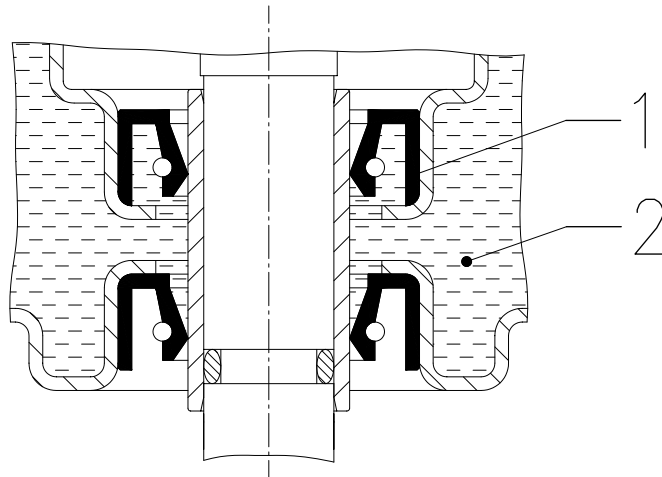


N°	PART NAME	MATERIAL	Q.TY	N°	PART NAME	MATERIAL	Q.TY
1	Volute	AISI 304	1	46	Bearing housing	AISI 304	1
3	Motor flange	AISI 304	1	52	Terminal insulating box	PA6 glass fibre reinforced	1
6	Shaft with rotor	AISI 303	1	53	Terminal insulating cover	PA6 glass fibre reinforced	1
7	Impeller	AISI 304	1	54	Power cable	-	1
11	Lip seal	NBR	2	55	Float switch [1]	-	1
12	Motor frame with stator	-	1	56	O Ring	NBR	1
13	Motor cover	AISI 304	1	57	Bolt	AISI 303	3
19	Pump side ball bearing	-	1	58	Press cable	Brass	[2]
20	Fan side ball bearing	-	1	59	O Ring	NBR	[2]
21	Adjusting ring	Steel C70	1	91	Washer	AISI 304	1
23	Capacitor	-	1	94	Shaft sleeve	AISI 303	1
26	O Ring	NBR	1	95	O Ring	NBR	1
27	O Ring	NBR	1	96	O Ring	NBR	1
28	O Ring	NBR	1	97	Cable connector [1]	NBR	1
30	Cable connector sleeve	Brass	[2]	98	Cable connector	NBR	1
34	Impeller nut	AISI 304	1	127	Cable connector [1]	Brass	1
37	Pump casing	AISI 304	1	128	Cable connector	Brass	1
44	Strainer	AISI 304	1	204	Screw	Stainless steel A2 UNI 7323	1

[1] Only for version single phase with float switch

[2] Version with float switch quantity 2
Version without float switch quantity 1

SEAL



N°	PART NAME	MATERIAL
1	Lip seal (12x22x7)	NBR
2	Lubricant	White mineral oil

DIAGRAM AND ELECTRIC CONNECTIONS

**SINGLE PHASE MOTOR
WITH FLOAT SWITCH**

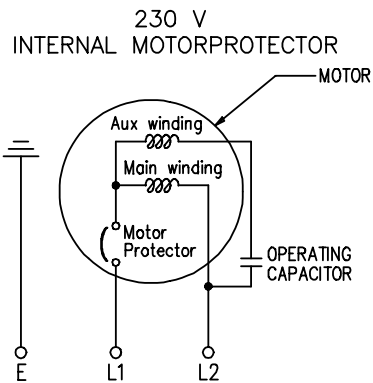
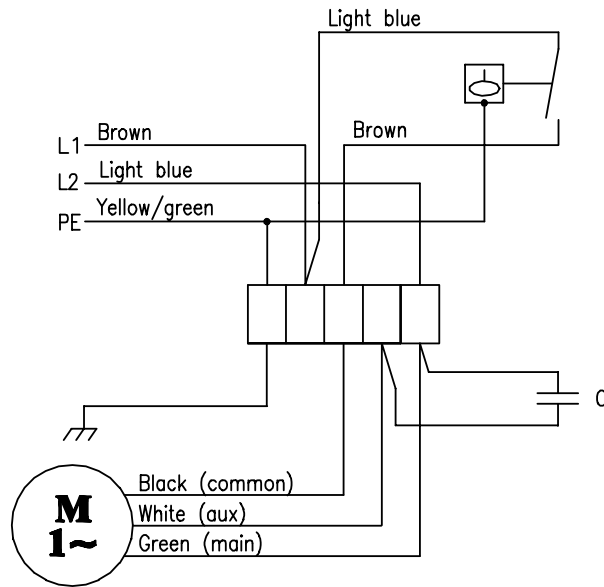
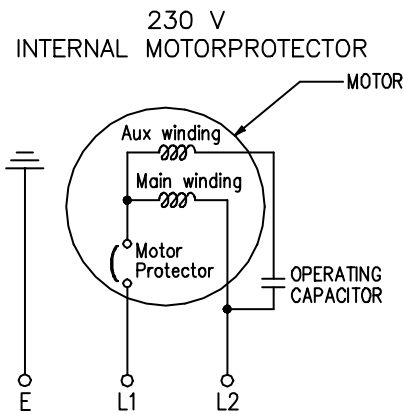
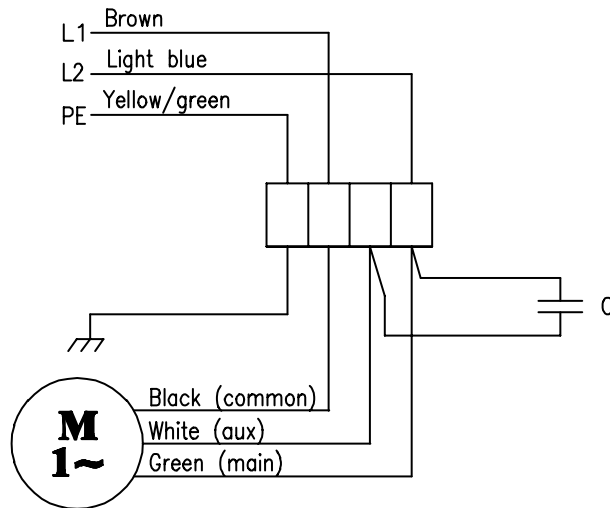
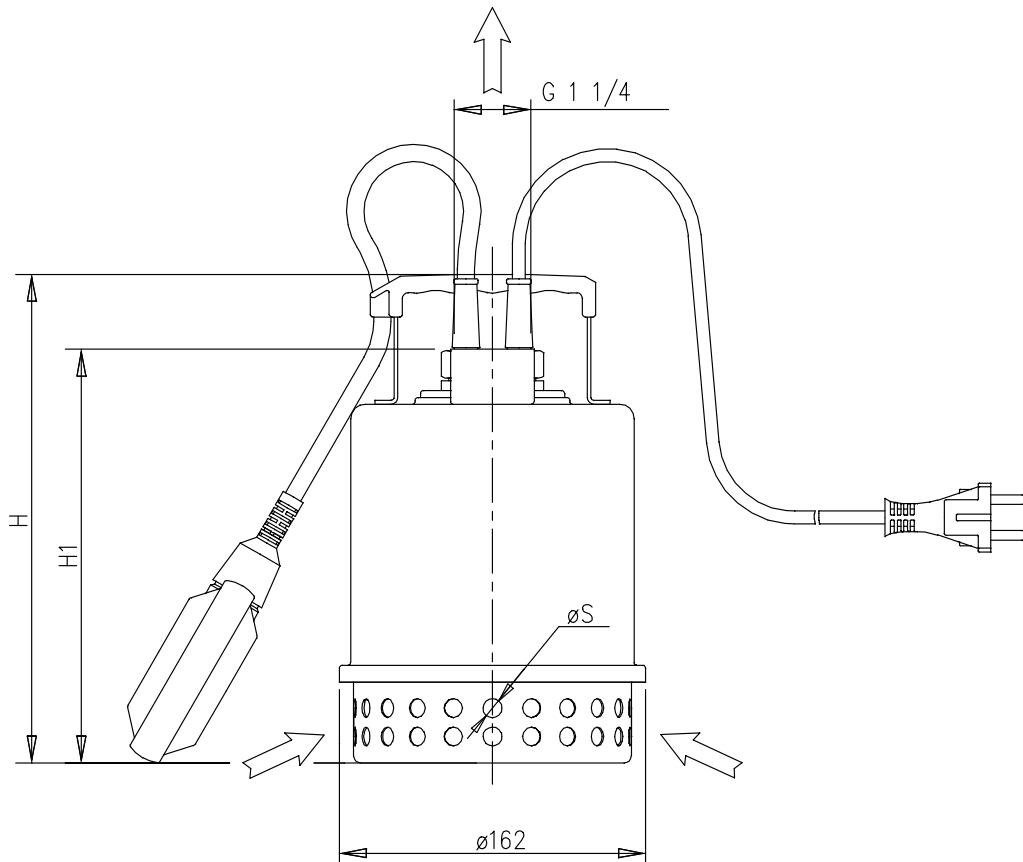


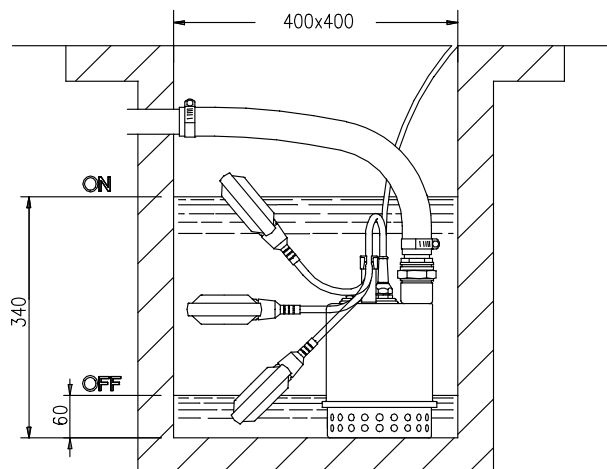
DIAGRAM AND ELECTRIC CONNECTIONS

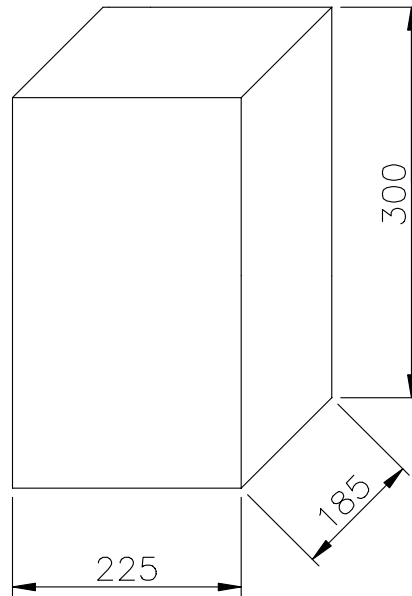
**SINGLE PHASE MOTOR
WITHOUT FLOAT SWITCH**





Pump type	Dimensions mm		
	H	H1	S
BEST ONE	260	220	10
BEST ONE VOX	285	245	20





Type pumps	Weight [kg]	
	Standard	With 10 m cable
BEST ONE	5.1	5.9
BEST ONE VOX	5.0	5.8

Type pumps Single Phase 230 V 50 Hz	kW	HP	Capacitor Single Phase		Input [kW]	Full load current [A]	Locked rotor current Single Phase [A]
			μF	V			
BEST ONE	0.25	0.33	8	450	0.51	2.2	5.1
BEST ONE VOX	0.25	0.33	8	450	0.5	2	5.1

Type pumps Single Phase 230 V 50 Hz	Ball Bearing	
	Pump side	Fan side
BEST ONE	6200 ZZ	6000 ZZ
BEST ONE VOX	6200 ZZ	6000 ZZ